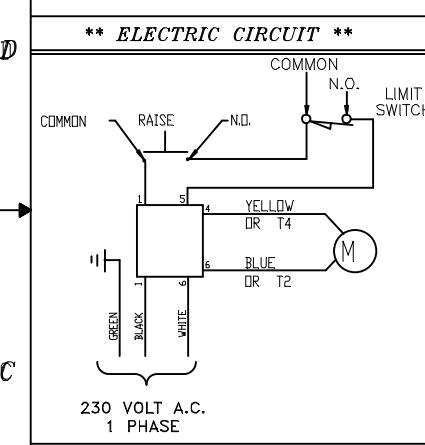
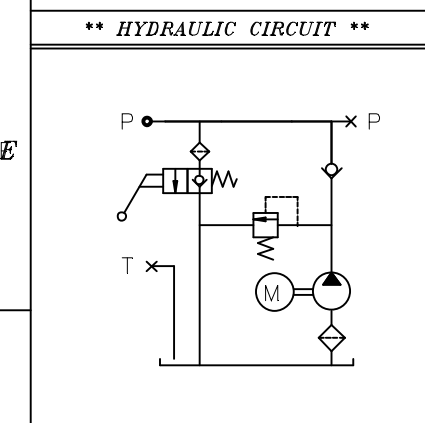


**\*\* NAMEPLATE INFORMATION \*\***

CUSTOMER		
STONE HYDRAULICS		
SERIAL NUMBER	PART NUMBER	
DATE CODE	MODEL NUMBER	
AB-1270		
COUNTRY OF ORIGIN		
FACTORY WIRING AT		
230 VAC	19	2755
www.stonehydraulics.com		



**\*\* UNIT SPECIFICATION \*\***

MOTOR	208-230 VOLTS AC, 15-18 AMPS, 3450 RPM, 1PH, 60Hz, 2 HP, 56 FR. INT. DUTY, TENV
PUMP	A.F.C. 2.0 CC/REV. (.122 CU.IN./REV.)
RELIEF	RV-19 FIXED RELIEF VALVE SET AT 2755 P.S.I.
ENDHEAD	9/16 SAE PRESSURE-RETURN PORT 3/8 N.P.T. AUXILIARY RETURN PORT (PLUGGED)
TANK	4.0 GALLON (700 CU.IN USABLE) VERTICAL MOUNT WITH BREATHER-FILL PORT
VALVING	CHECK VALVE 2W2P MANUAL RELEASE VALVE
WIRING	230 VOLTS AC TO MOTOR, MOMENTARY ON & PULL-TYPE ACTUATING SEALED LIMIT SWITCHES UNIT DESIGNED TO MEET REQ. OF UL201
ASSEMBLY FINISHING	WIPE UNIT CLEAN OF OIL APPLY NAMEPLATE TO MOTOR
PACKING SHIPPING	SHIP Q4-1000-00 LOOSE IN CARTON UNIT INDIVIDUALLY PACKED ONE PER CARTON CARTONS ON PALLET

**\*\* UNIT PERFORMANCE \*\***

1.70 G.P.M. AT 2450 P.S.I.  
AT 230 VOLTS AC & 19 AMPS  
AT 45 CENTISTOKES (200 SSU)  
3030 P.S.I. MAXIMUM AT NO FLOW

**SPX MANUFACTURING STANDARDS**

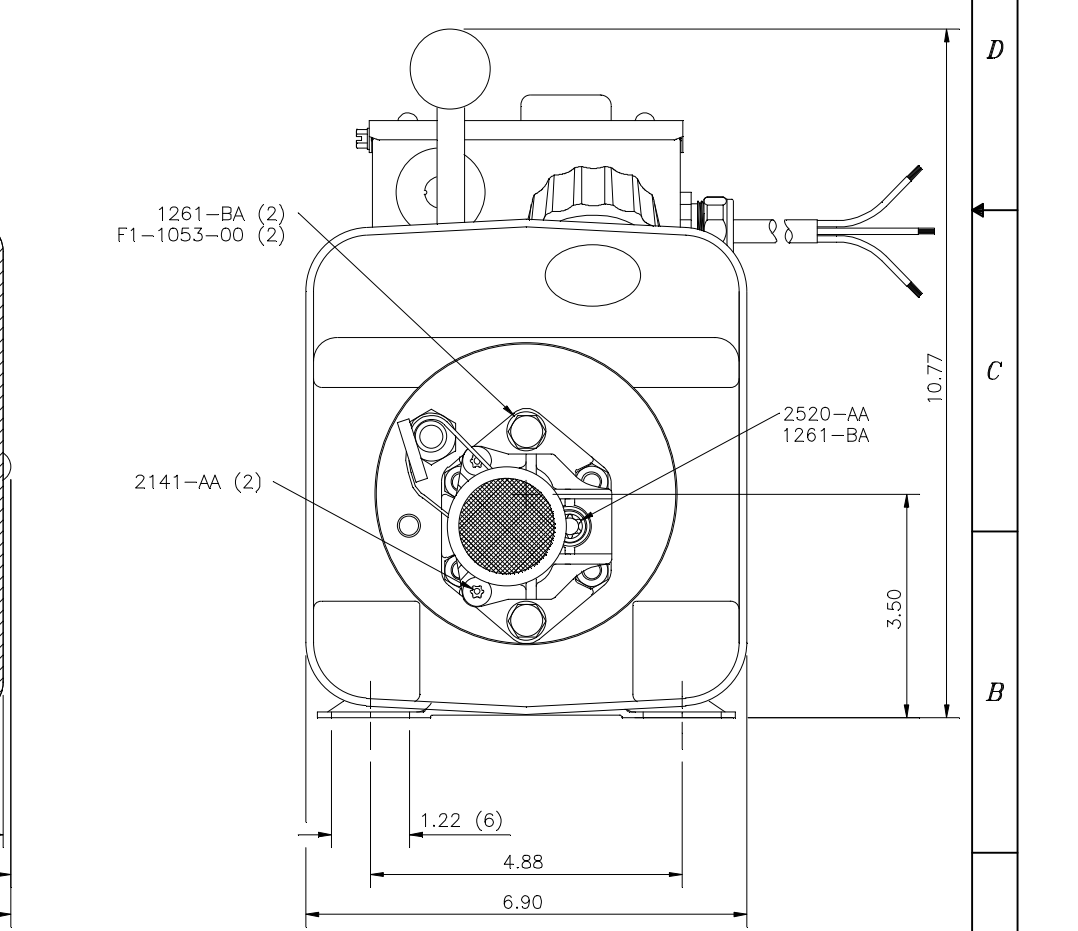
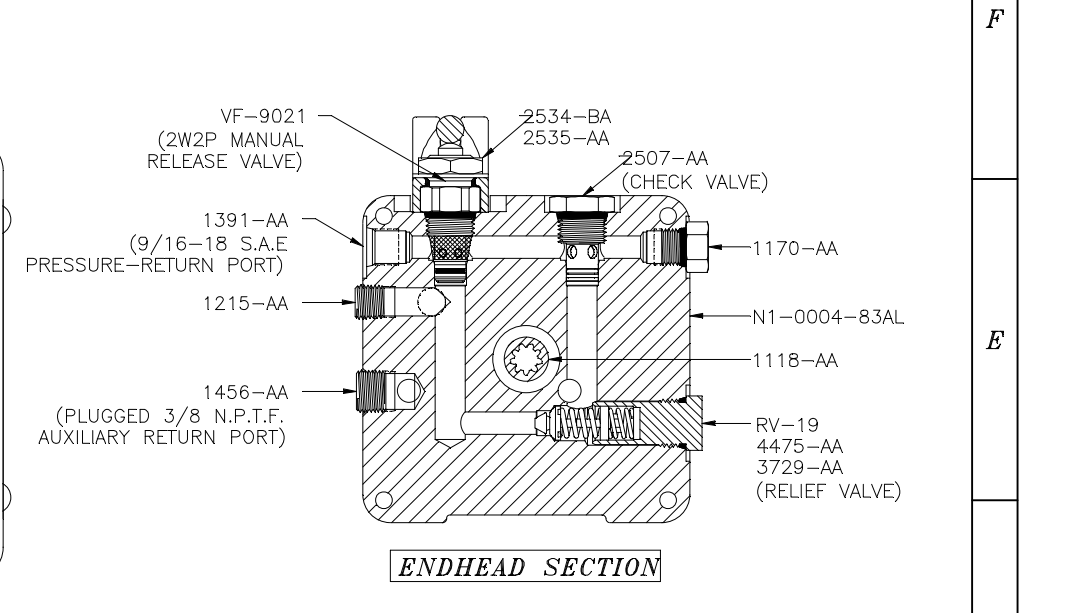
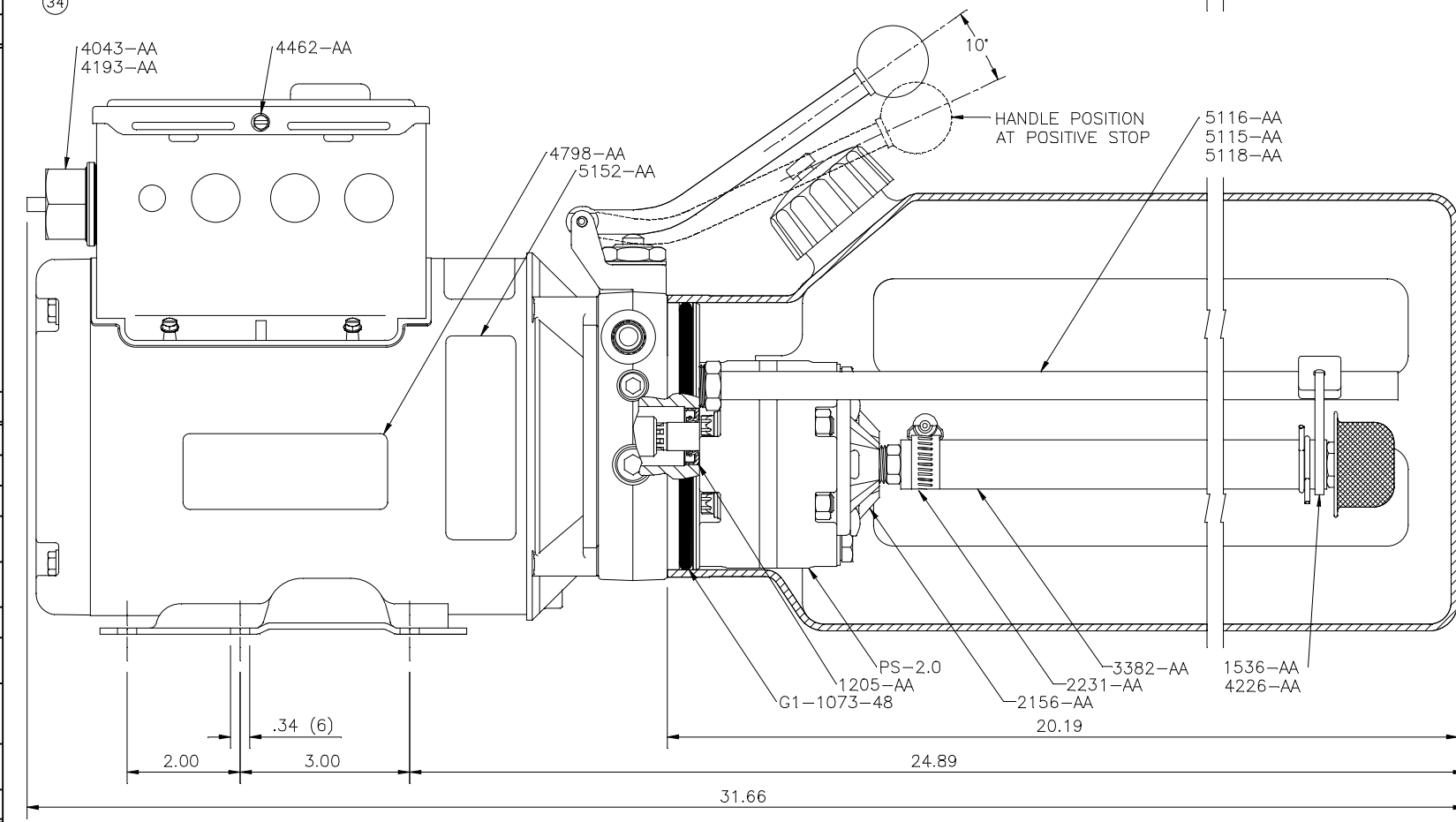
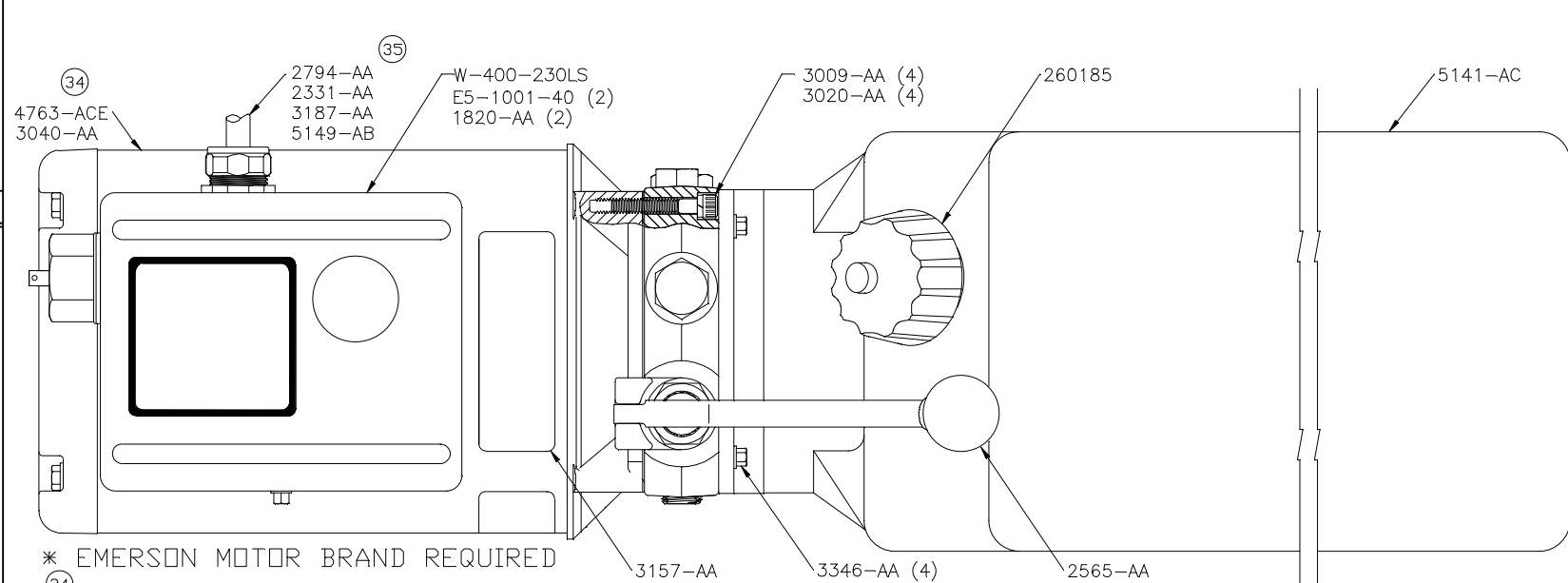
FASTENER TORQUES	2.11.01
AUTOHOIST TEST	2.16.14
DIELECTRIC TEST	2.16.15
LABELING	2.16.59

**WARNING**

THIS POWER UNIT DOES NOT CONTAIN DEVICES WHICH PROTECT USERS FROM THE EFFECTS OF SUDDEN LOSS OF PRESSURE IN HYDRAULIC CYLINDERS.

**REVISIONS**

REV.	BY	CHECKED	ECO	DATE	DESCRIPTION
34	KSS	BRM	1001070	7-JAN-10	REMOVED 4763-AC. ADDED 4763-ACE. UPDATED TITLE BLOCK. ADDED NOTE.
35	DRJ	KSS	1006400	3-AUG-10	REMOVED (1) 2794-AA



**\*\* UNIT PERFORMANCE \*\***

1.70 G.P.M. AT 2450 P.S.I.  
AT 230 VOLTS AC & 19 AMPS  
AT 45 CENTISTOKES (200 SSU)  
3030 P.S.I. MAXIMUM AT NO FLOW

**SPX MANUFACTURING STANDARDS**

FASTENER TORQUES	2.11.01
AUTOHOIST TEST	2.16.14
DIELECTRIC TEST	2.16.15
LABELING	2.16.59

**WARNING**

THIS POWER UNIT DOES NOT CONTAIN DEVICES WHICH PROTECT USERS FROM THE EFFECTS OF SUDDEN LOSS OF PRESSURE IN HYDRAULIC CYLINDERS.

THIRD ANGLE PROJECTION	TOLERANCES UNLESS NOTED ANGLES ± 1° 1 PLACE ± .020 2 PLACES ± .010 3 PLACES ± .005 4 PLACES ± .001 FINISH 125 MAX C/B .020	DRAWN BY WAT CHECKED BY MKJ MATERIAL PER ABOVE	DATE DRAWN 11-APR-03 DATE CHECKED XX/XX/XXXX ALT. MATERIAL	FOR PART OR OPER. HEAT TREAT FINISH	<b>SPX</b> HYDRAULIC TECHNOLOGIES	TRACKING NUMBER XXXXXXX SCALE NTS SIZE D REV 35
DRAWING NAME AC UNIT (STONE HYDRAULICS) DRAWING NUMBER AB-1270					SHEET 1 OF 1	