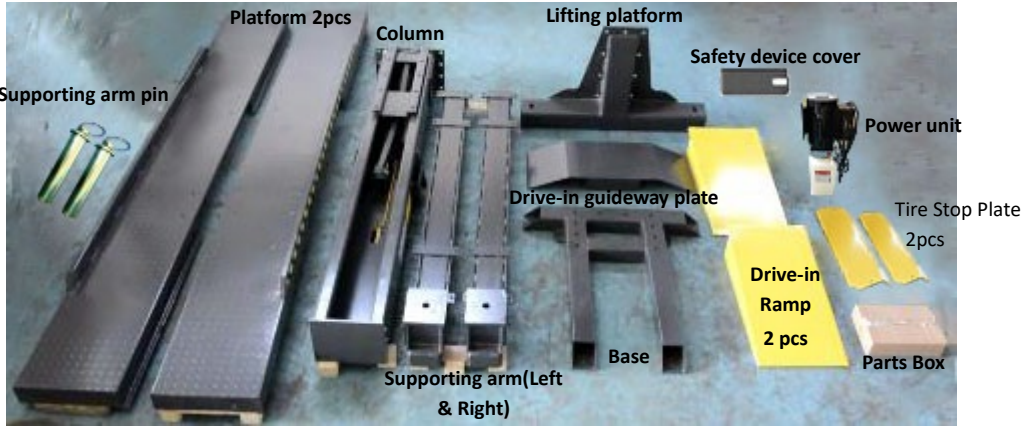


STEPS OF INSTALLATION FOR SPL-6

1. Check and ensure the installation space is suitable for lift dimensions. (Length 4880mm*width 2820mm*height 2770mm)
2. Checks lift's model number and the parts before install. Take off the packaging on the machine and the packing rack. Move aside the parts and check the parts according to the shipment parts list.

Shipment list



Parts Box List



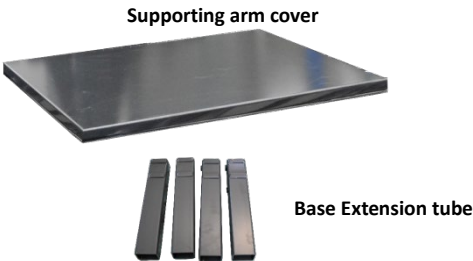
Parts Bag List



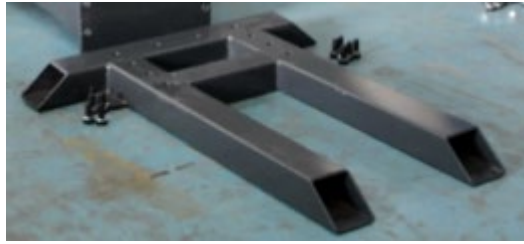
3. Optional parts: Oil tray/4pcs



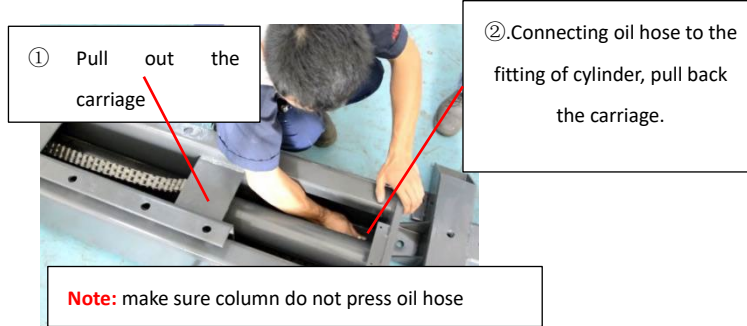
4. Special parts needed for Exhibition(only for SEMA show)



5. Lay the base flat to the ground, confirm installation place according to the ground state.



6. Lay the column next to the base and connecting oil hose of cylinder.



7. Fix column to the base plate (be careful the column not slip when set the column upright), install the bolts and make the column vertical.



Install hex bolts: M20*50
(with Lock Washer and washer/10pcs)



Level bar

Use shims to make the column vertical

8. Install lifting platform



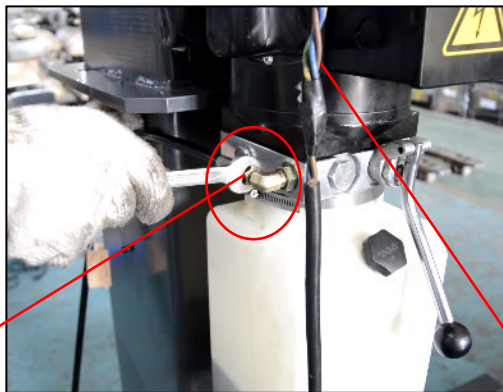
Use forklift to raise the lifting platform to match the mounting hole of carriage and tighten the hex bolts: M20*40 (with Lock Washer and washer/8pcs)

9. Install Base Extension tube to strengthen the base (This only apply to SEMA show, since anchor bolts cannot be used in SEMA show)



Base Extension tube:
4pcs

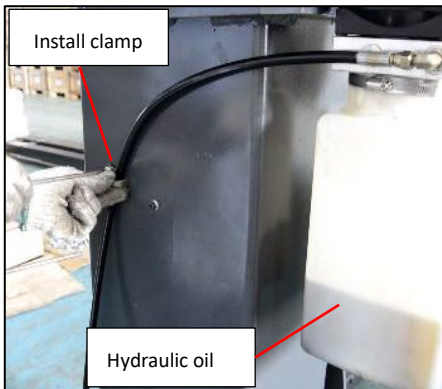
10. Install power unit, connect with 90° oil hose fitting and connect to power wire.



Oil hose and 90° oil
hose fitting

Power wire

11. Install the oil hose clamp, press with the safety device spring, install the protective cover of safety device and add the hydraulic oil.

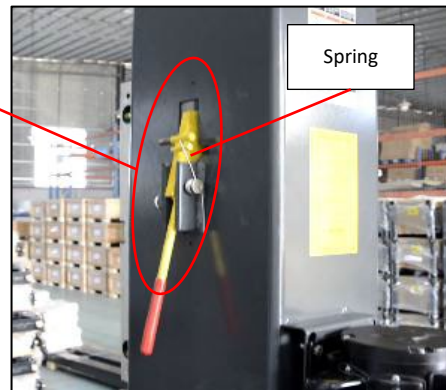


Install clamp

Hydraulic oil

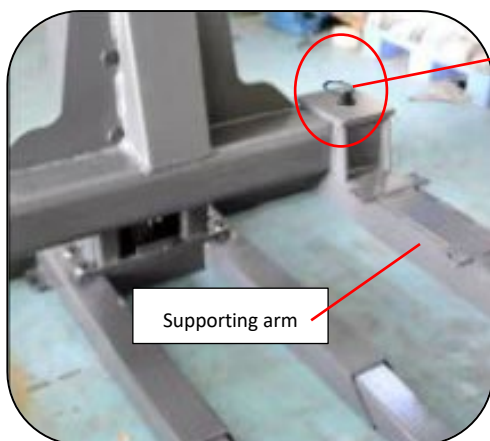


Protective cover



Spring

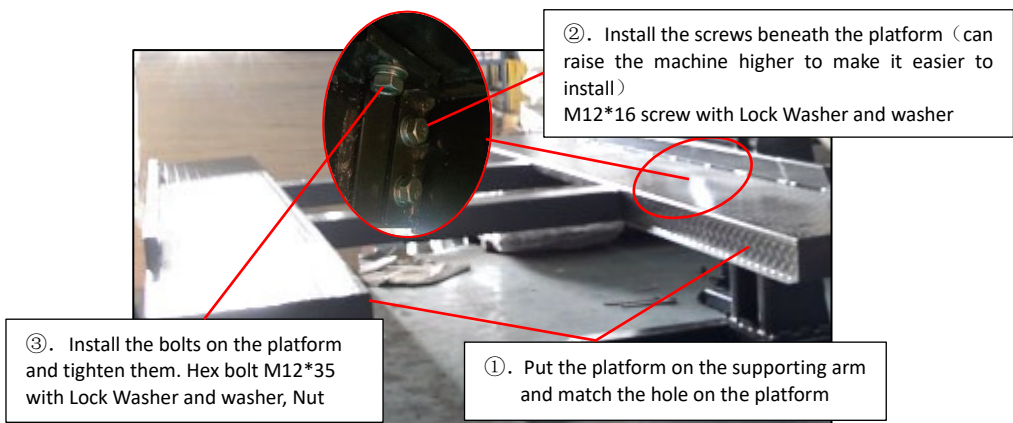
12. Install Supporting arm (left and right) (Rise the lifting platform to first grade of safety lock to make it easier to install)



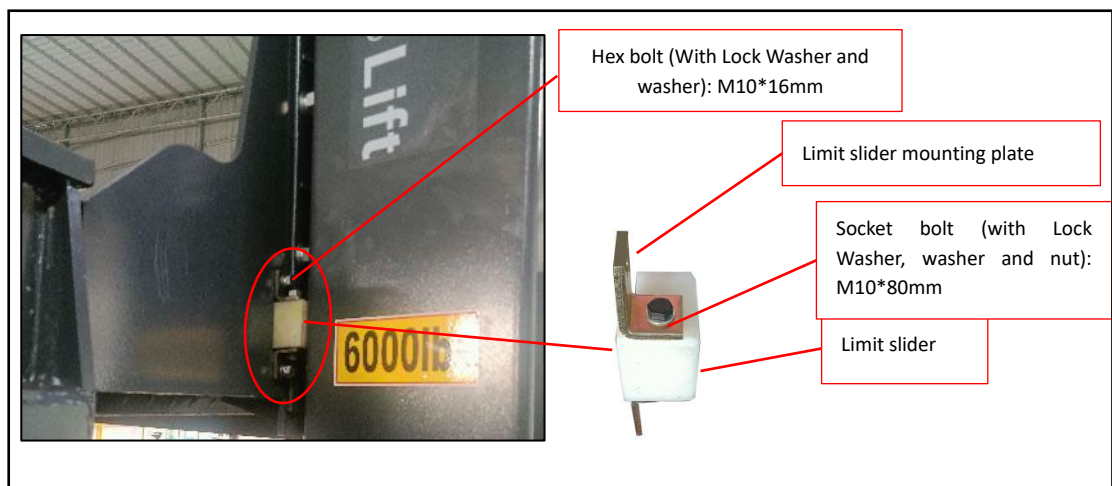
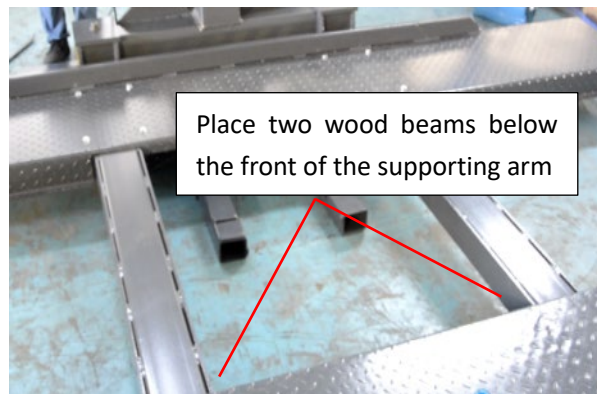
Supporting arm

Install the pin and Snap Ring (can use a hammer to help if the pin is too tight)

13. Install the platform



14. Place the Drive-in guideway plate, place two wood beams below the front of the supporting arm, lower the lift to the wood beam position, and then lower the lift until it's convenient to install the limit slider.



15. Install the Drive-in Ramp and Tyre Stop plate, place the oil tray and supporting arm cover, and install the curtain.

