

RJ - 7W Secondary lift



Special explanation;

1、 For damage to the equipment caused during the shipment, the buyer shall claim compensation to the carrier.

2、 Safety performance is already considered when designed and manufactured. However, proper training and thorough handling can also increase safety. Do not operate or repair the equipment without reading the instructions.

3、 The company will not notice the partial structural improvement of the product. No obligation for updates of previously sold products.

4、 Please read and fill in the Warranty Card on the last page of this manual carefully and give feedback to the dealer and the company for filing.

5、 As one of the basis for providing after-sales service. Otherwise, it shall be deemed to have automatically waived the right to enjoy the corresponding services, and it shall be solely responsible.

6、 Do not lift the load exceeding the rated lifting weight of 3200 kg.

7、 Read the warning signs on the device carefully.

This product is only allowed to be 18 years old, have passed the relevant operation training, and carefully read and understand this manual.

8、 The Company always reserves the right of final interpretation of this product.

Main performance of the equipment

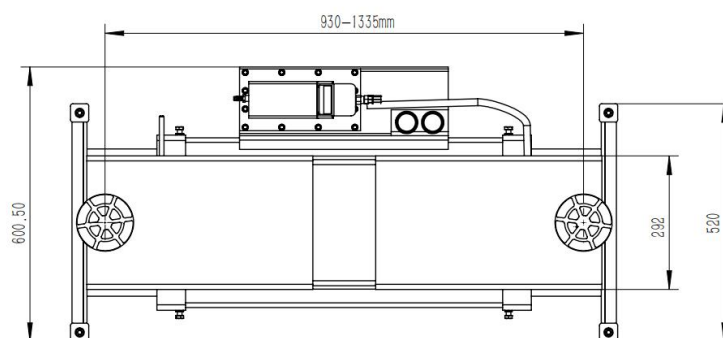
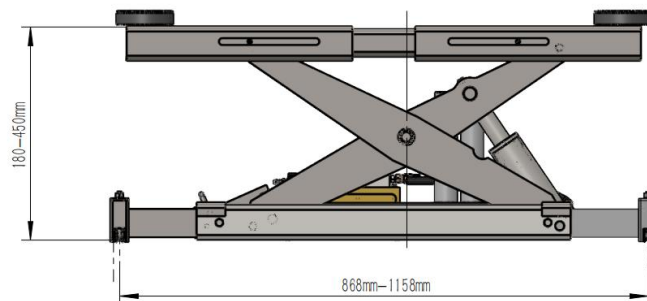
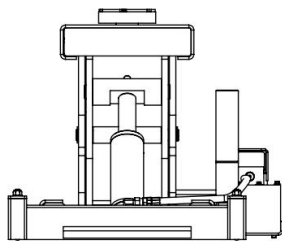
- With the four-column elevator or shear elevator matching use, beautiful appearance.
- Hydraulic cylinder drive, quiet working environment, smooth lifting。
- Can be controlled to drop lock, can be locked at the required height for operation, safe and reliable。
- The height of the cushion is adjustable, which is suitable for the maintenance and testing needs of different chassis models。
- Mechanical stable padlock safety protection device, safe and convenient

Instructions for the use of the equipment

- 1.Secondary lifts are only allowed to be installed on specific four-column lifts / shear lifts, and not all models are suitable for installation. The lifting weight of the secondary lifts must reach 2 / 3 of the maximum lifting weight of the four-pillar lifts / shear lifts。
- 2.Be sure to install the supporting side panels to ensure the fastening. Please refer to "Equipment Installation"。
- 3.This product only allows the personnel who have passed the relevant operation training and carefully read and understand this manual。
- 4.Before each use, please confirm whether the secondary elevator is in the correct position and whether the four-pillar machine / shear elevator has a safe padlock。
- 5.This product is only allowed to lift vehicles, not to move or transport vehicles.
6. After lifting the vehicle, the equipment must be locked, and the vehicle is allowed to be repaired after the padlock is completed.
7. Do not use the load to exceed the rated load.
8. The support cushion must be held at the designated support point of the vehicle. Note that the cushion should not slide during the lifting process.
9. When two secondary lifts are used at the same time, ensure that the distance between the two secondary lifts is not less than 0.85 meters.
10. When use, the center of gravity of the load must be centered, and the pull length of the expansion arm must be consistent.
11. Before using the secondary elevator, ensure that the vehicle is braking, and limit the position if necessary to prevent the vehicle from moving.

12. When using the secondary lifting vehicle, the personnel shall not be in the vehicle, on board or under the vehicle, and the operator and other personnel must keep a sufficient safe distance from the secondary lift.
13. Operators must ensure that there is no harm to themselves and others during the operation of the secondary lift.
14. Only the accessories and spare parts provided by the company are allowed.
15. The product and its accessories shall not be changed without permission.
16. Operating air pressure is 8.5-12bar.
17. If the requirements mentioned in this manual are not observed, it may cause: the elevator fails to work properly, damage to equipment, injury to personnel, property damage and other consequences.

Basic parameters of the equipment



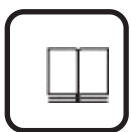
Secondary lift machine parameters

- 1.Rated lift weight:3181 kg
- 2.Adjust height;85/157mm
- 3.Equipment height:180mm
- 4.Support width:930-1335mm
- 5.The maximum spacing of slide rail:1158mm
- 6.Working air pressure :8.5-12bar
- 7.Equipment self-respect:155kg

Special attention:

1. During the installation, the left and right positions must be in the middle, and the pulling length of the expansion arm must be consistent.
2. The height of the cushion can be adjusted according to the actual situation.
3. If the height cannot meet the requirements, you can consult our company to buy more high pads.

Installation of equipment



Read and fully understand the following relevant instructions and instructions carefully before installing the elevator.

1、 Installation preparation;

Before installing a new elevator, note the following matter¹.

- 1、 Please confirm whether the secondary elevator matches the four-pillar machine / shear elevator.
2. Determine the installation position according to the parameter size of Figure 1.
3. Determine that the runway track is parallel and there is no foreign matter in the rail groove.

WARNING!

Failure to meet the requirements of the following steps will lead in damage or destruction of the equipment.

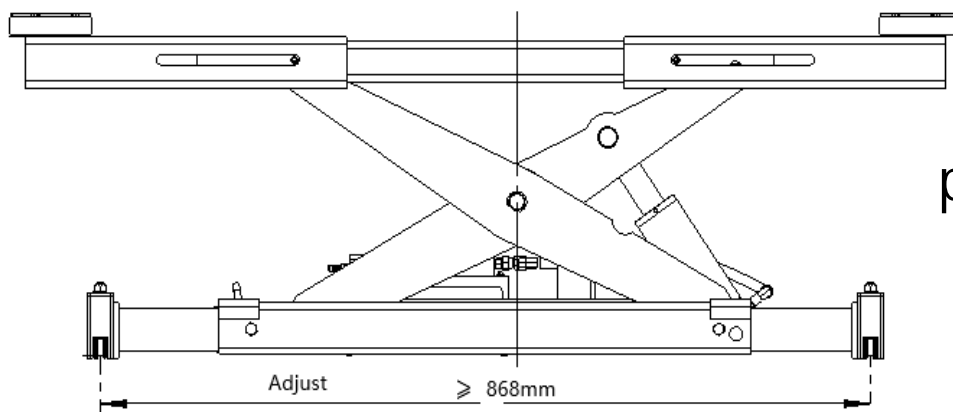
1. The elevator shall not be installed in an environment with a large amount of dust, chemicals and other corrosive media.
2. Prepare the required installation and measuring tools. The necessary installation tools are the premise to ensure the quality of lifting installation and the quality of use. Common tools are: automatic level, steel tape (5m), steel plate ruler, movable hand; screwdriver assembly; horizontal ruler; self-paint, lubricant, necessary adjustment gasket, etc.
3. Open the package and remove all the packaging items. Check for missing parts and damage in transportation. According to the requirements of the "packing list". Any damage during the freight process must be filled on the freight list before marking and reported in writing to the freight company.

Determine the parts and check for missing parts. If you find anything missing, contact your service company immediately.

4. Please press the figure below for installation. make sure that the bolt nut is firmly locked!

Place the secondary lift on the track

1. Please make sure that the track spacing is not less than 820mm.
2. The secondary elevator must be placed in the center, and the length of the telescopic hanging plate on both sides is the same.



pi g. 1

Schematic diagram of the secondary elevator installation

NOTE



When using different four-column machines / shear elevators, please adjust the length according to the actual runway width, and lock the fixing screws. As shown in Figure (1)

Debugging of equipment

Before commissioning and using the secondary elevator, the installed four-pillar machine / shear elevator is in a safe padlock state, and the operator and other personnel must keep a sufficient safe distance from the secondary elevator.

Raise: Connect the air source and press the right side of the pedal. The second lift began to rise slowly, up to the highest position.

Drop: first open the safety lock block ①, move the handle to the right, never leave the hand, leave the lock position, and then press the left side of the foot board, the second lift slowly drop until the lowest position.

Note: The lock handle should not be released during the lift descent. In addition, the secondary lift table should be operated (up, padlock, down) several times before repairing the vehicle to ensure that there is no problem before use

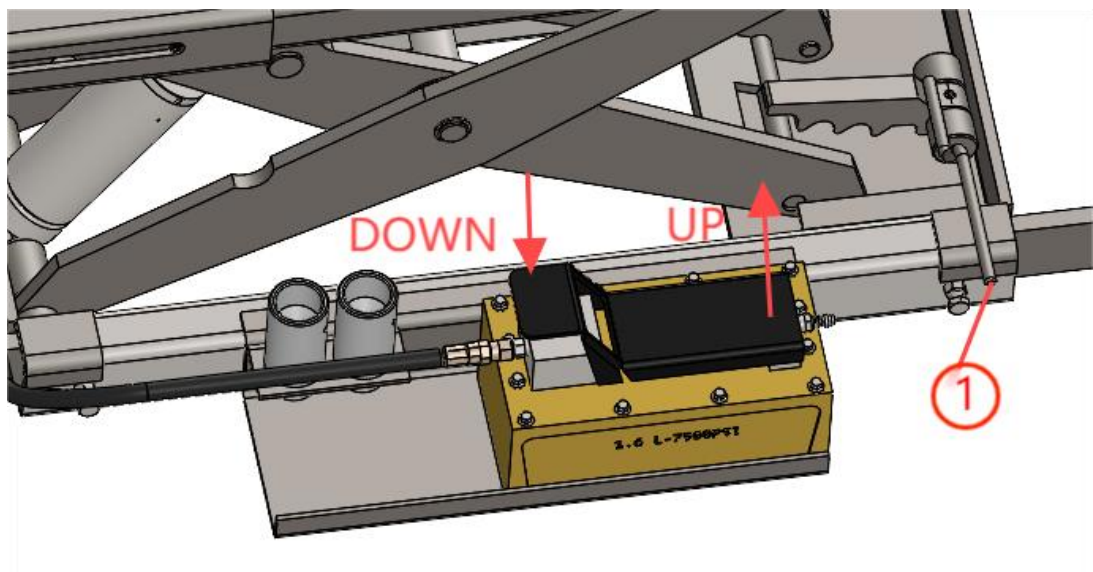


Fig (2) Operation indication diagram

WARNING!



During debugging, it is strictly prohibited to put hands or other limbs into the machine, otherwise it may cause injury! Only professionals at least 18 years old who have passed relevant training are allowed to conduct commissioning!

Maintenance and inspection of the equipment

一、 Daily maintenance and inspection

1. Lift parts shall be kept clean without corrosion and rust
2. Check the working position of the safety lock and whether the unlocking mechanism are normal during the operation process. 3
4. Check the hydraulic joint and the hose for leakage
5. Check the connection of all card springs, and be reliable
6. Check the connection of all bolts, nuts and screws. — If it is loose, tighten it immediately.
7. Check whether the switch handle is damaged
8. Check whether the track is normal and invisible for weekly maintenance and inspection

二、 Monthly maintenance

1. Check the strength and connection of the hanging plate bolts, and tighten them immediately
2. Check whether the track of the four-pillar machine is deformed 3. 3
4. Check and tighten the loose bolts, nuts and screws

三、 Annual maintenance and inspection

1. Lubber the shaft and slider. Use lubricating grease for lubrication at least 2-3 times a year
2. Replace the special maintenance terms of the hydraulic oil

四、 The following maintenance must be carried out by professionals:

1. Replace the hydraulic hose
2. Replace the shaft sleeve
3. Replace or transform the hydraulic cylinder (if necessary)
4. Replace or transform the air-liquid pump (if necessary)

Safety identification of the equipment

This product is a shear secondary lift, wrong operation or improper use will cause harm to human body, so the operation and maintenance need professional personnel, please pay attention to observe the relevant instructions on the equipment label, if the label lost please contact your service provider to buy paste, to avoid unnecessary personnel injury and property damage.



1. Anti-clamp hand label

Paste on the supports on both sides. Please avoid extending hands or other limbs into the equipment during operation and debugging. Otherwise, it may cause serious human harm



2. Air pressure label

Paste on the back side of the equipment, the working pressure of the equipment is 8.5-12bar, Do not exceed this range, otherwise the equipment will not work properly or cause equipment damage.



3. Load tag

Paste on the front of the equipment, the highest load of the equipment is 3181kg, overload is strictly prohibited, must ensure that the center of the load is in the center of the equipment, the load is strictly prohibited.

Setting Up the Air-Operated Hydraulic Pump

Your Rolling Jack comes with an Air-Operated Hydraulic Pump, which provides air pressure to the Rolling Jack. It is your responsibility to supply air pressure to the Pump.

The Air-Operated Hydraulic Pump comes from the factory with Hydraulic Fluid. You do not need to add any at this point, unless the Hydraulic Fluid has leaked out. Checking the Hydraulic Fluid level is described in the next section.

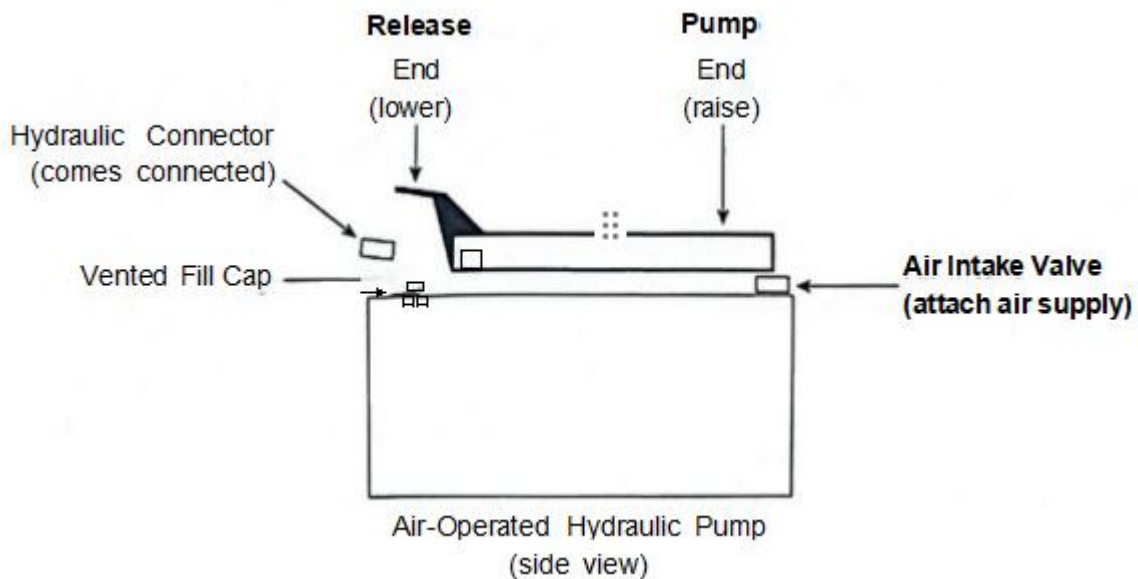
Air pressure should be set to 20 cubic feet per minute (.57 cubic meters per minute) and 100 psi (7 bar; bar is a metric unit of pressure).

Do not exceed 125 psi (8.6 bar) at any point, you can damage the Air-Operated Hydraulic Pump.

△ WARNING Before performing installation or maintenance, release the pressure currently in the system by pressing and holding the Release End of the Pump, then disconnect the Pump from its air pressure at the Air Intake Valve.

To set up your Air-Operated Hydraulic Pump:

1. Remove the thread protector from the Air Intake Valve.



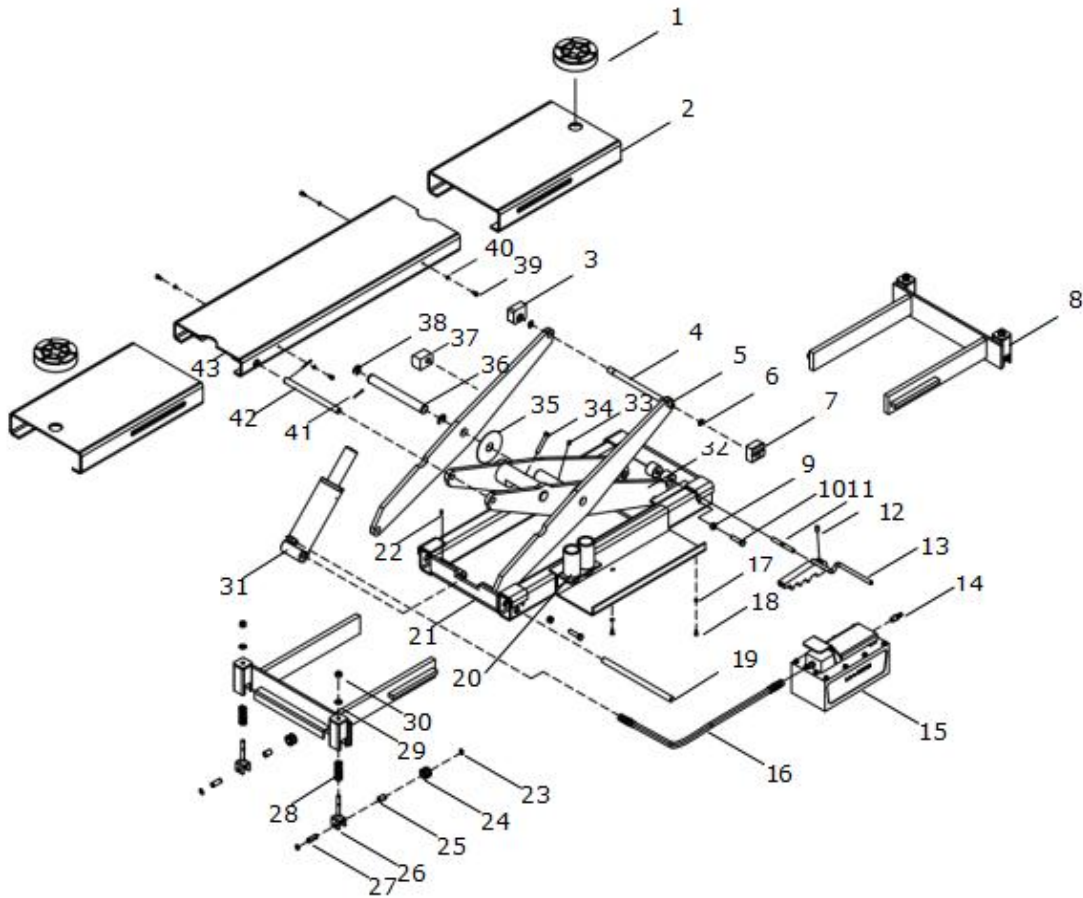
2. Install a threaded fitting (not supplied) that is compatible with your air supply into the Air Intake Valve.

3. Connect your air supply to the threaded fitting you just installed.

△ CAUTION An appropriate Air Line regulator and water separator must be installed on the air supply. **Failure to install these items could lead to damage and voids the warranty on pneumatic components.**

4. The Vented Fill Cap is tightened for shipment; loosen it approximately one turn counterclockwise before starting normal operation.

PART ASSEMBLY DRAWING



NO	Description	Qty	NO	Description	Qty
1	Rubber Pallet	2	23	Ring ϕ 12	8
2	Lift arm assembly	2	24	Roller	4
3	Left Nylon Lock	1	25	Needle roller bearing	8
4	Connecting shaft	1	26	Pulley yoke	4
5	Arm	2	27	Axle	4
6	Ring ϕ 16	2	28	Spring	4
7	Right Nylon lock	1	29	Washer ϕ 10	4
8	Slide assembly	2	30	Lock nut M10	4
9	Lock Nut M10	4	31	Oil cylinder assembly	1
10	Bolt M10X40	4	32	Arm assembly	1
11	Axle	1	33	Alemite fitting	1
12	Screw M10X16	1	34	3/8-16*2-1/4	1
13	Safety rack	1	35	Gasket	2
14	Straight joint	1	36	Axle	1
15	Air pump	1	37	Nylon lock	2
16	High pressure pipe assembly	1	38	Ring ϕ 15	2
17	Washer ϕ 5	2	39	Screw M6X8	4
18	Screw M5X10	2	40	Lock washer ϕ 6	4
19	Axle	1	41	Pin 3*25	2
20	Extension set	2	42	Axle	1
21	Base	1	43	Face plate	1
22	Screw M6X16	2	44		

Common troubleshooting method

order number	Fault phenomenon	The exclusion method
1	The table does not reach the maximum lifting height	Check whether the hydraulic oil in the oil tank is sufficient.
2	The elevator cannot be raised	Check whether the pressure relief handle is in the correct position without the function. Check whether the nut at the pressure relief screw of the air-hydraulic pump is too tight. Check for air pressure at 8.5-12bar.
3	The elevator cannot descend to the lowest position	Check the elevator for damage. Check for foreign matter in the inside of the hoist.apply oil.
4	When lifting, the elevator has a small drop after loosening the step	Loosen the exhaust screw of the cylinder for exhaust gas.

Note: In order to avoid equipment damage or personnel damage caused by misoperation, if you cannot be judged, please contact your service provider in time,